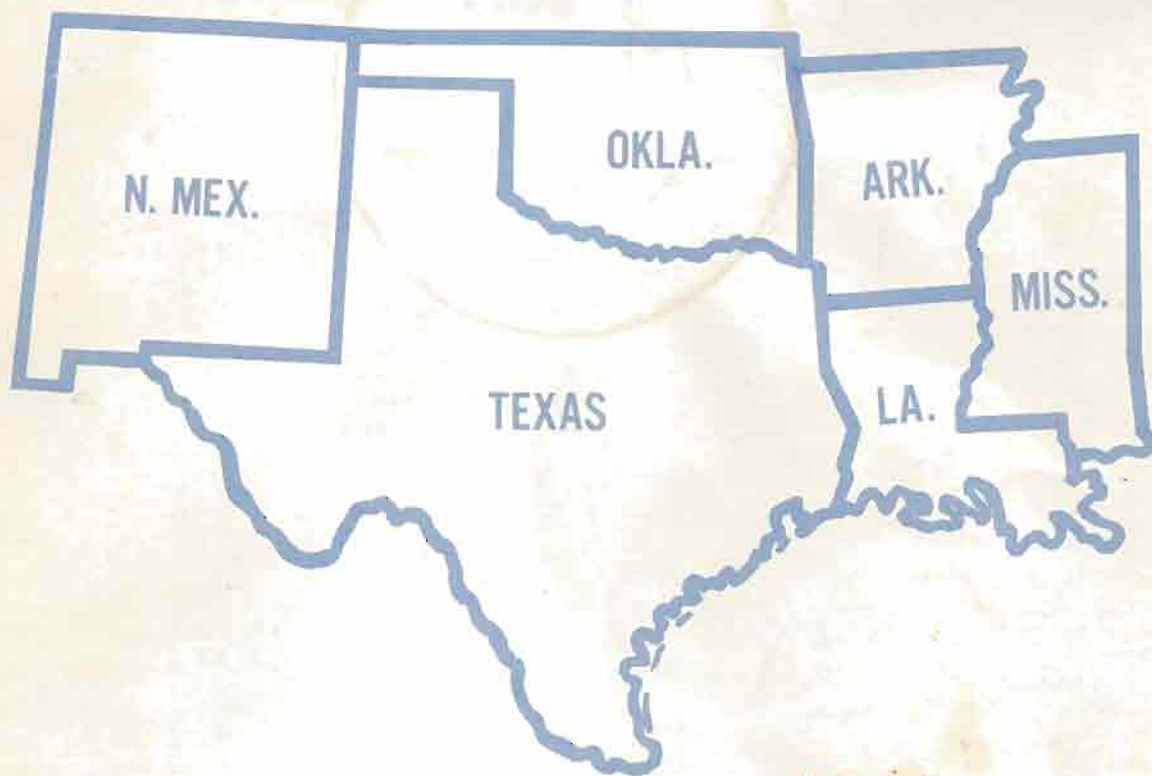


AMERICAN WATER



SKI ASSOCIATION

SOUTH CENTRAL REGION



1977

TOURNAMENT GUIDE

1939 — *Our 38th Year* — 1977
MEMBER FEDERATION OF WORLD WATER SKI UNION

Six reasons why you should order CORRECT CRAFT, SKI- MASTER, CONNELLY, CYPRESS GARDEN, AND LAKE REGION from Breisch

1. WE STOCK THEM. WE HAVE ONE OF THE LARGEST STOCKS OF WATER SKIS AND ACCESSORIES IN THE REGION. 2. OUR LOW PRICES. UP TO 25% OFF ON SKI EQUIPMENT. 3. FAST DELIVERY. ORDERS PHONED IN GO OUT C.O.D. WITHIN 24 HRS. THAT MEANS ALLOW 3 OR 4 DAYS DELIVERY. 4. 24 HOUR SERVICE. CALL OUR RECORDER PHONE ANYTIME AFTER YOU HAVE LISTED YOUR ORDER. YOU HAVE 20 SECONDS TO LEAVE YOUR NAME, ADDRESS, PHONE NUMBER, AND ORDER. 5. OUR GUARANTEE. RETURN ANY ITEM WITHIN 30 DAYS UNUSED AND UNDAMAGED, WE WILL EXCHANGE IT OR REFUND YOUR MONEY. 6. PRO SHOP ADVICE. WE MAKE IT OUR BUSINESS TO FIT THE SKIERS NEEDS.

CONNELLY

SHORTLINE HOOK

Adjustable	A	SL	I	145.00	Price Code (Length in inches)
Fixed	F			145.00	
Double Fixed	D			155.00	
Plate with Rear Toe	P				
XS	S	M	L	XL	
7-8	9-10	11-12	12-13		
(Shoe Size)					
	XS				
	M				
	L				
	XL				

SUPER GLASS HOOK

Adjustable	A	SG		125.00
Fixed	F			125.00
Double Fixed	D			135.00
Plate	P			140.00

HOOK

Adjustable	A	H		120.00
Fixed	F			120.00
Double Fixed	D			125.00
Plate	P			130.00

COMP 2

Adjustable	A	C		105.00
Fixed	F			105.00
Double Fixed	D			110.00
Plate	P			120.00

TRICK SKIS

Adjustable	A	T		135.00
Blank	B			90.00
Fixed	F			135.00
Plate	P			160.00

Skiers	105	135	165		95	140
Weight	under	to	to	to	under	to
lbs.	105	135	165	195	95	140
ski	61"	63"	65"	67"	69"	
Size	— based on 30-36 mph					

SKIMASTER

FORM FIT SKI VEST

V-MODEL	CHEST	PRICE
CX8	35-40"	17.99
C9	35-40"	"
CM	26-30"	23.99
CL	31-34"	"
AB	34-37"	32.99
AM	37-40"	"
AL	40-43"	34.99
AXL	43-46"	"
AXXL	46-48"	39.99

COLORS FOR ABOVE
W - WHITE
Y - YELLOW
G - GREEN
B - BLUE

DELUXE NYLON SKI VEST

DB-MODEL	CHEST	PRICE
S	33-36"	27.99
M	36-38"	"
L	39-42"	"
XL	43-46"	29.99
XXL	46-48"	"

NAVY - GOLD COLOR ONLY

DELUXE SKI GLOVES w/VELCRO

MODEL-S8 SIZES S,M,L,XL
ALL ONLY 6.99

ALL VESTS U. S. COAST GUARD APPROVED

C.O.D. ORDER FORM

QUANTITY	COLOR	SHOE OR CHEST SIZE	MODEL (LETTERS)	PRICE	LENGTH OF SKI

SEND 1.00 for color catalogue of products

OKLA. RESIDENTS ADD 2% TAX

TOTAL _____

YOU MAY MASTERCHARGE IT

your number _____
signature _____
NAME _____
MAILING ADDRESS _____
CITY _____ STATE _____
ZIP _____ PHONE () _____

CALL 918-245-5040

SEND ORDERS TO G. W. BREISCH

Mailing Address: Rt. 2, Box 17, Sand Springs, Okla. 74063

AMERICAN WATER



SKI ASSOCIATION

7TH STREET & AVENUE C SOUTHWEST WINTER HAVEN, FLORIDA 33880 TELEPHONES (813) 293-4579 AND 294-1248

WILLIAM D. CLIFFORD, EXECUTIVE DIRECTOR

After Dec. 15, 1976-324-4341

OFFICERS

David W. Lake, President
1505 King George Blvd.
Ann Arbor, Mich. 48104
Don Borrer, Ch. of the Board
1225 Dublin Road
Columbus, Ohio 43215
Lex Carroll, Vice President
Adams Road
Oakham, Mass. 01068
William R. Grinditch, Jr. Treasurer
923 Hillsboro Mile A1A
Pompano Beach, Fla. 33062
Dr. Jack W. Horton, Secretary
166 W. Longden
Arcadia, Calif. 91006

REGIONAL

EXECUTIVE VICE PRESIDENTS

Nito Quilevik, Midwest
450 Hessianhoe Dr.
St. Paul, Minn. 55112
Robert K. Corson, East
29 Alpine Trail
Sparta, N. J. 07871
Jerry Edwards, South Central
502 Crestview
Marble Falls, Texas 78654
Beverlye Owen, South
117 Trail East
Hendersonville, Tenn. 37075
Louise Fox, West
300 Vernon
Oakland, Calif. 94610

DIRECTORS

James R. Lamm
9409 W. Lawrence Ct.
Schiller Park, Ill. 60176
Don Borrer
1225 Dublin Rd.
Columbus, Ohio 43215
Richard L. Noels
5139 Coyle
Skokie, Ill. 60076
Lex Carroll
Adams Rd.
Oakham, Mass. 01068
Lee Merban
P. O. Box 189
Williamsburg, Va. 23185
Henry Miner
107 Plaxdale Rd.
Liverpool, N. Y. 13088
Charles Fontenot
215 Cardinal Dr.
Vidor, Texas 77662
 Floyd McCreeght
4208 Rivercrest
Austin, Texas 78745
Darrell Sallee
1012 Maxwell
Ardmore, Okla. 73401
C. W. Lowe, Jr.
225-7th St., West
Birmingham, Ala. 35201
Elmer Stalling
482 Kennwood Ave.
Merritt Island, Fla. 32952
Dr. David F. Watson
710 Crescent Ave.
Greenville, S. C. 29601
Dale St. John
Box 525
Fall River, Mass. 01908
Dr. Jack Horton
166 W. Longden
Arcadia, Calif. 91006
Dick Marlow
2535 Arroyo Ave.
Pinole, Calif. 94564

HONORARY VICE PRESIDENTS FOR LIFE

Charles R. Stigh, Jr.
Richard D. Pope, Sr.
Leland C. Sutherland

HONORARY VICE PRESIDENTS

Jack Andersen
William P. Barlow, Sr.
Thomas H. Perkins
Howard H. Callaway
Charles A. Johnson
Marvin L. Rothenberg
Don Ibsen
William P. Barlow, Jr.
B. J. Lynn
C. Allen Buboltz
Peter A. Salsaf
William D. Clifford
C. W. (Bill) Wenner

April 1, 1977

Dear South Central Region Skier,

As we embark on the 1977 skiing season, we must look back over the past year and reflect. Many excellent tournaments were held during the summer of 1976. The regional tournament at Florence, Mississippi, was relaxed and most enjoyable. Membership has grown to over 1800 members or over a twenty per cent increase. A National Headquarters, Hall of Fame, and Museum building was completed and the dedication held during the past year in Winter Haven, Florida. Each of us can be proud of our part in these accomplishments, but there is a lot of work and enjoyment left for 1977.

As we look to the 1977 season we see fifteen sanctioned and four non-sanctioned tournaments on the schedule. It is hoped each of you will schedule several of these tournaments on your itinerary. We urge each of you to get involved; either to ski, judge, pick-up boat drive or ride and hopefully all three. We need working skiers and skiing workers. Chief Judges be sure to include anyone who wants to work in any capacity to the fullest extent of their qualifications. Regardless of how busy we are, let's be sure to take the time to encourage those new to our sport, either in skiing or judging.

Most of all, I wish all success in improving your skiing performances, your judge's or driver's ratings, and your enjoyment of the greatest sport in the world.

Good Skiing,

Jerry Edwards
Executive Vice President
South Central Region

1939 — *Our 38th Year* — 1977
MEMBER FEDERATION OF WORLD WATER SKI UNION

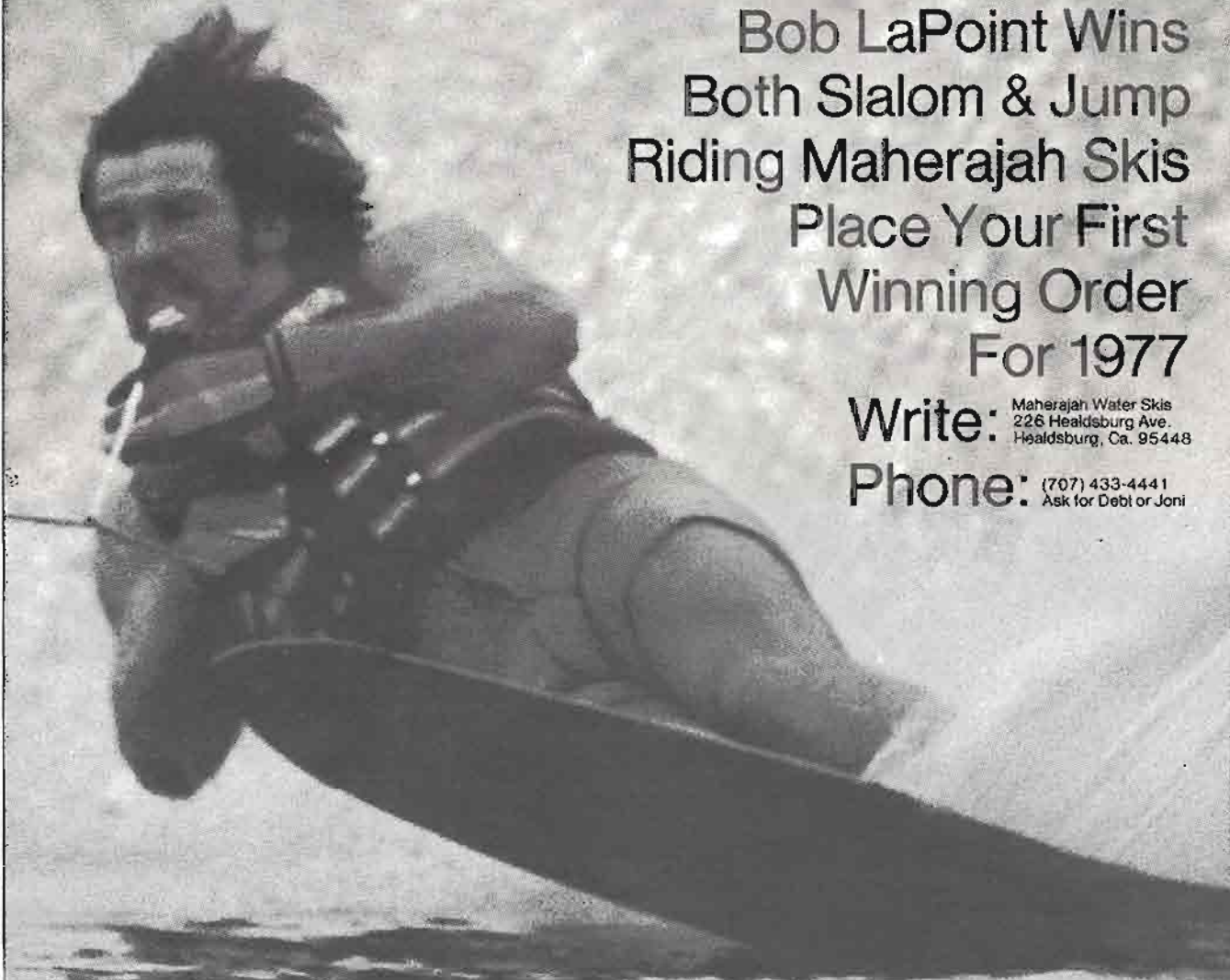
Bob LaPoint Wins Riding Maherajah

January 1 & 2, 1977 Honolulu, Hawaii
1st AWSA Sanctioned
Tournament of 1977
Bob LaPoint Wins
Both Slalom & Jump
Riding Maherajah Skis
Place Your First
Winning Order
For 1977

Write: Maherajah Water Skis
226 Healdsburg Ave.
Healdsburg, Ca. 95448

Phone: (707) 433-4441
Ask for Debi or Joni

MAHERAJAH[®]
WATER SKIS



SUMMARY OF AWSA TOURNAMENT RULES

The rules of competition for sanctioned water ski tournaments are established by the American Water Ski Association, covering the three major events—Slalom, Tricks and Jumping.

DIVISIONS OF COMPETITION

Contestants in the three major events are separated into the following divisions on the basis of their ages on Jan. 1 prior to the tournament: Junior Girls, 12 and under; Junior Boys, 12 and under; Girls 13 - 16 inclusive; Boys, 13 - 16 inclusive; Women, 17 - 29 inclusive; Men 1, 17 - 24 inclusive; Men 2, 24 - 34 inclusive; Senior Women, 30 and over; Senior Men, 35 - 44 inclusive; Men 4, 45 and over; Open Women, 13 and over; Open Men, 13 and over.

SLALOM EVENT

Each contestant follows the tow boat through the entrance gate, passes around the outside of all six buoys and leaves through the exit gate, then returns through the course in a similar manner with the boat speed increased two miles an hour. The skier repeats this procedure until the maximum speed for his division is reached, at which point the tow rope is shortened from 75 ft. to 60 ft., then to 53 ft., 47 ft., 43 ft., and subsequently, by additional three-foot increments until the skier misses. Maximum speeds are 36 miles an hour for the men 1 & 2 and Boys divisions and 34 MPH for all others. Minimum starting speeds in MPH are Men 1 & 2 and Boys, 30; Senior Men and Men 4, 28; Sr. Women, Women, Girls, Jr. Boys, 26, and Jr. Girls, 24. Skiers may elect to waive all passes below a certain speed and rope length but they must complete a perfect pass to receive credit for passes skipped. Otherwise, they score only the number of buoys they actually make. The contestant with the most consecutive points is the winner of the event. Run-offs of ties are made at the boat speed and rope length at which the first buoy or gate was missed.

A buoy not missed counts one-half point when the skier rounds the buoy on the outside in skiing position, and one-half point when the skier returns to within the boat wake before passing the level of the next set of buoys in skiing position.

TRICK EVENT

Trick skiing is done on short, wide skis which have no rudder. Each trick has an appointed value and skier is rated on the number of tricks he can perform within two 20 second runs. The more difficult the trick performed, the higher the point value awarded. A fall in any pass ends the trick run for that 20-second period. The skier is allowed to practice at each end of the course and is allowed one fall outside the course.

JUMPING EVENT

Each contestant is permitted three passes through the jump course. A pass or jump is registered when the skier passes the buoys which mark the beginning of the jump course, except when in the opinion of the judges, a hazard exists such as rough water, interference of another boat, or other reasons. In the event of a fall after a pass or jump, the skier is allowed three minutes to be back on his skis from the time the tow boat

returns to pick him up. A jump is scored when the skier passes over the ramp, lands and skis to the ride-out buoy without falling, provided he does not purposely touch any part of the tow line other than the handle, while in the air.

The jumper shall tell the driver which side, at what speed (not in excess of the maximums permitted for his division) and at what distance to pass the ramp. Maximum speeds are: 35 MPH for Open Men, Men 1 & 2, 30 MPH for Open Women, Women, Senior Women, Senior Men, Men 4, Boys and Girls and 28 MPH for Junior Girls and Junior Boys. The jumper's best distance on a single jump determines his placement. In the event of a tie, the second longest jump will decide the placement, or if needed, the third longest jump.

The jumping ramp is an inclined plane with mounted aprons set at angles in relation to the jump. It must be from 12 to 14 feet wide at all points, 21 to 22 feet long out of the water and no less than two feet of ramp length under water. The jump height is set at 6 feet for Open Men, 5½ feet for Men 1 & 2 and 5 feet for all other divisions. Jump distances are measured by Johnson jump meters which employ a triangulation sighting method of determining distances.

OVERALL SCORING

A skier's overall score for an event is computed by relating the performance to established National Overall Performance Standards (NOPS). These standards, usually a national or world record for the event, are represented by 1000 points. Each contestant in the slalom and trick event receives points in direct proportion to this standard. For example, in Jr. Girls slalom, 52 buoys is NOPS for 1000 points. A contestant scoring 48 buoys is entitled to $48/52 \times 1000$ or 923.1 overall points for the event. Similarly, a 54 buoy performance would earn 1,038.5 points. In the jumping event, the contestant receives overall points in proportion that the square of his score bears to the square of the standard. For example, in open Mens Jumping, 169 feet is the 1000 point standard. A jumper with a leap of 160 feet would be scored $160 \times 160 / 169 \times 169 \times 1000$ or 896.3 overall points for the performance. Scores obtained in deciding ties are not counted in determining the overall winner.

SAFETY

Mandatory safety equipment and the appointment of a Safety Director for sanctioned tournaments are emphasized in the Official Rules. Life jackets capable of floating the skier, preferably head up, and providing protection from impact damage to ribs and internal organs must be worn by contestants in slalom and jumping. Because of slow speeds involved, the proximity of safety boats and the necessity for utmost freedom of movement by the contestant, trick riding rules do not require the wearing of safety equipment. The safety director is charged with the responsibility of observation of all safety measures involving equipment, contestants and general skiing conditions. He has the authority to take whatever action is necessary, including stopping the tournament whenever he observes a condition he considers unsafe. He can be overruled only by the chief judge.

WANT TO BE A JUDGE?

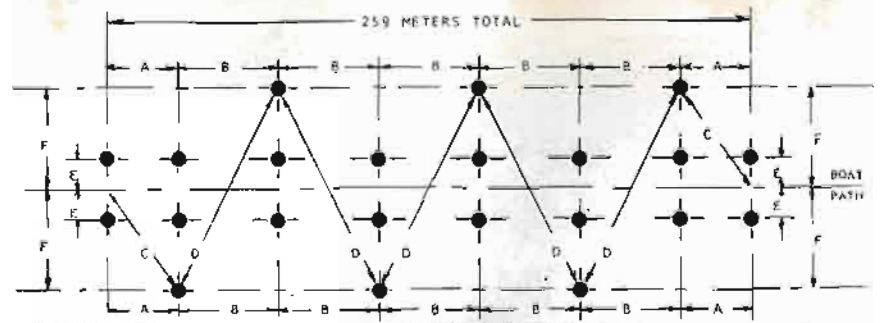
This summer, the South Central Region will have a judge at each tournament to counsel and help those who aspire to become judges. We need more qualified judges!

The first step in getting involved with judging is to obtain an Official Rule Book from AWSA Headquarters. One rule book will be sent free of charge to each AWSA member requesting it. After receiving the rule book, study it carefully to gain a working understanding of the rules of a sanctioned water ski tournament.

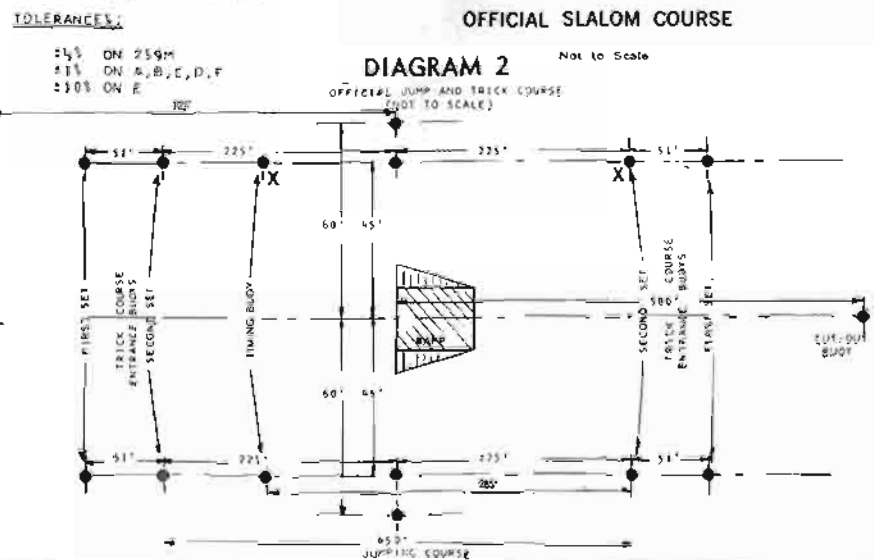
Some of the things aspiring judges should practice as they ski with other tournament skiers are as follows: timing for slalom, tricks, and jumping; practice judging slalom and tricks; read jump meters; plot jumps on a master board.

After gaining a working knowledge of the rules, one should be ready to volunteer for several secondary positions leading to becoming a judge. Don't hesitate to ask for help in becoming a judge at your next tournament.

Get Involved! Become a Working Skier!



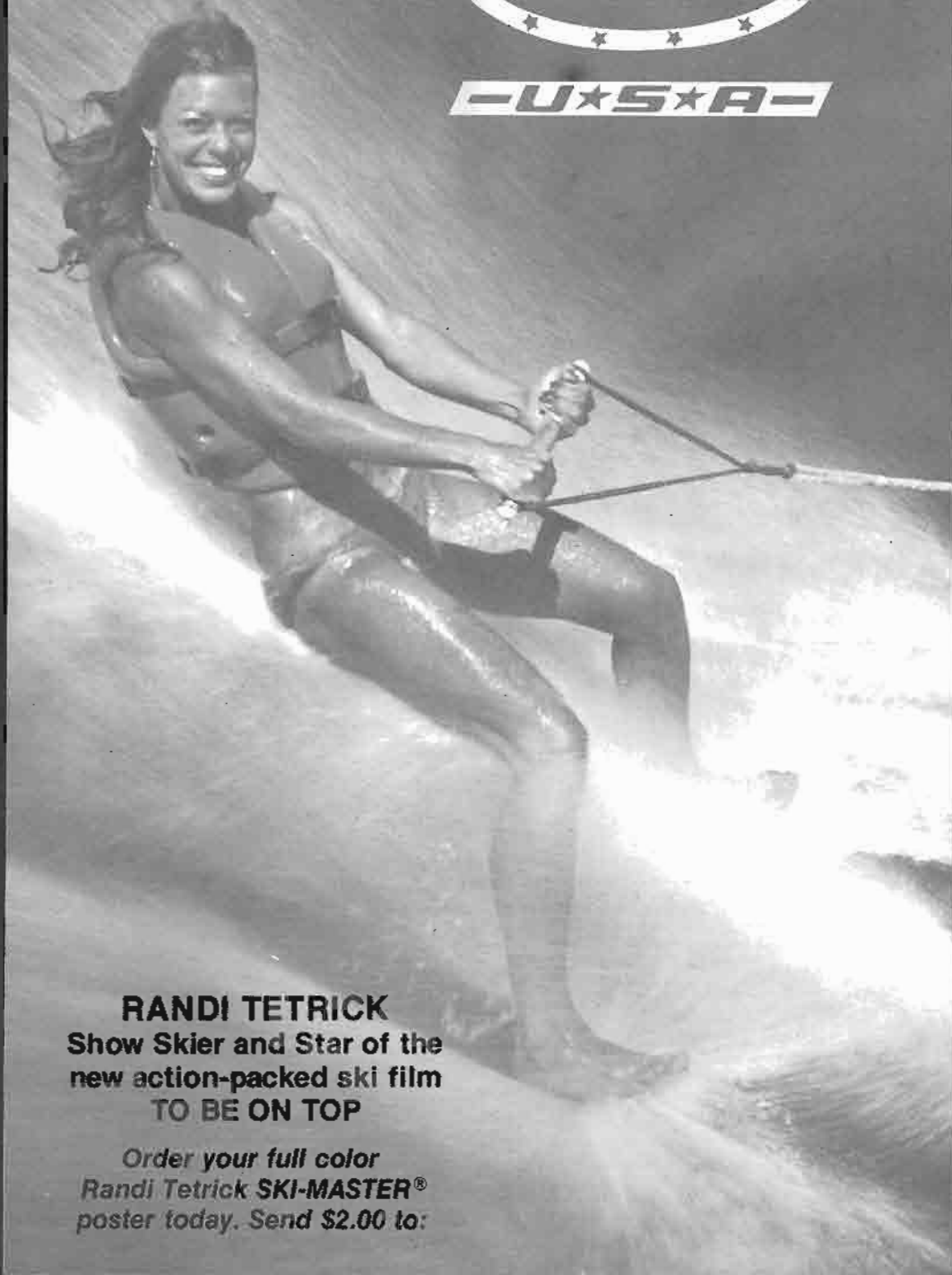
DIMENSIONS:		ALLOWED RANGES ON DIMENSIONS:	
259M	= 849' 8.8"	259M OVERALL	1257.705-260.295M=845'5.9"-853'11.8"
A = 27M	= 88' 7.0"	A (27M)	26.710- 27.270M= 87'8.4"- 89'5.6"
B = 43M	= 134' 6.3"	B (43M)	40.590- 41.410M= 133'2.0"- 135'10.3"
C = 29.347M	= 96' 3.4"	C (29.347M)	29.054- 29.640M= 95'3.9"- 97'2.9"
D = 47.011M	= 154' 2.8"	D (47.011M)	46.541- 47.481M= 152'8.3"- 155'9.3"
E = 1.25M	= 4' 1.2"	E (1.25M)	1.125- 1.375M= 3'8.3"- 4'6.1"
F = 11.5M	= 37' 8.8"	F (11.5M)	11.585- 11.615M= 37'4.2"- 38'1.3"



DESCRIPTION	WATER TURNS					WAKE TURNS					RAMP TURNS				
	TRICK NO.	2 SKIS		1 SKI		TRICK NO.	2 SKIS		1 SKI		TRICK NO.	2 SKIS		1 SKI	
		Basic	Rev	Basic	Rev		Basic	Rev	Basic	Rev		Basic	Rev	Basic	Rev
180° FB	1	30	30	60	60	14	60	50	80	80	37	90		150	
180° BF	2	30	30	60	60	15	50	50	80	80		90		150	
360° FF	3	40	40	90	100	16	110	110	150	150		130		250	
360° BB		40	40	90	100	17	160	160	210	210		130		250	
Each Additional 180°		10		20											
540° FB						18	240	240	310	310					
540° BF						19	250	250	320	320					
720° FF						20	320		380						
720° BB						21	320	330	380	380					
Stepover 180° FB	4	40	60	120		22	110	110	180		38	160		230	
Stepover 180° BF	5	70	70	110		23	110	110	160		39	130		200	
Stepover 360° FF						24	200	200	260	260					
Stepover 360° BB						25	180	180	240	240					
Stepover 540° FB						26	260	260	370	370					
Stepover 540° BF						27	280	280	370	370					
Toehold 180° FB	6			100	110	28			150	180					
Toehold 180° BF	7			120	130	29			180	180					
Toehold 360° FF	8			220	220	30			300	300					
Toehold 360° BB	9			250	250	31			330	330					
Toehold 540° FB	10			400	400	32			500						
Toehold 720° FF				500											
Toehold 540° BF	11			400		33			500						
Toehold-S' over 180° FB						34			290						
Toehold-S' over-180° BF						35			320						
Side Slide	12	20	20	70	70						40	250		380	
Air SS and SS Ldg.												230		350	
Toehold SS	13			150	230										
Somersault forward						36	450		450		41	130		570	
Somersault backward											42	500			
Air 180° FB											43	120		180	
Air 180° BF												120		180	
Air 360° FF												210		310	
Air 360° BB												210		310	
Double Stepover 540° FB						44			400						



-U★S★A-



RANDI TETRICK
Show Skier and Star of the
new action-packed ski film
TO BE ON TOP

*Order your full color
Randi Tetrick **SKI-MASTER**®
poster today. Send \$2.00 to:*

TEXAS WATER CRAFTERS, Div. of TEXREC

P. O. Box 539 Wichita Falls, Texas 76307

27 YEARS IN THE SCR

In 1950, the South-Central Region was recognized by the American Water Ski Association as part of a five region division of the 50 states. The states that made up the SCR were: Louisiana, Texas, Oklahoma, Mississippi, Arkansas. Later, the state of New Mexico was added.

Where was the first South Central Region Water Ski Tournament? Could it have been on Lake Murray in Ardmore, Oklahoma, on August 19, 1951, under the leadership of Gordon Leaman, who was referred to as Regional Vice-President?

The only source for information is the "Water Skier", the first issue being published in October, 1951.

The next three South-Central Tournaments were held at the same location with the 1954 meet referred to for the first time as a "Regional" competition.

Locations of South-Central Regionals from 1954 - 1977:

1954 Ardmore, Oklahoma
1955 McQueeney, Texas
1956 Ft. Worth, Texas
1957 Orange, Texas
1958 Austin, Texas
1959 Houston, Texas
1960 Texoma Lake, Oklahoma
1961 Corpus Christi, Texas
1962 McQueeney, Texas
1963 Beaumont, Texas
1964 Austin, Texas
1965 Lubbock, Texas
1966 Tulsa, Oklahoma
1967 Shreveport, Louisiana
1968 Austin, Texas
1969 Port Gibson, Mississippi
1970 Austin, Texas
1971 Florence, Mississippi
1972 Hodges Gardens, Louisiana
1973 Ardmore, Oklahoma
1974 Rio Villa, Texas
1975 Arkadelphia, Arkansas
1976 Florence, Mississippi
1977 Leesville, Louisiana

SCR Executive Vice-Presidents from 1950 - 1977:

1950-51 Gordon Leaman, Oklahoma
1951-52 John Schaerdel, Texas
1952-53 George McDonald, Oklahoma
1953-54 Will Crews Morris, Texas
1954-55 Will Crews Morris, Texas
1955-56 H. J. Aston, Texas
1956-57 Hubert Spradling, Texas
1957-58 Thomas H. Perkins, Texas
1958-59 D. Gordon Rupe III, Texas
1959-60 Bobby Fletcher, Texas
1960-61 Byron McKean, Texas
1961-62 Byron McKean, Texas
1962-63 Wally Watson, Texas
1963-64 Ken Allmond, Texas
1964-65 Peter A. Salassi, Mississippi
1965-66 Peter A. Salassi, Mississippi
1966-67 Peter A. Salassi, Mississippi
1967-68 B. J. Lynn, Texas
1968-69 B. J. Lynn, Texas
1969-70 B. J. Lynn, Texas
1970-71 Peter A. Salassi, Mississippi
1971-72 Max Meinen, Texas
1972-73 Max Meinen, Texas
1973-74 Danny L. Rowzee, Louisiana
1974-75 Danny L. Rowzee, Louisiana
1975-76 Jerry Edwards, Texas
1976-77 Jerry Edwards, Texas



TEAM SHIRTS



**also means
Extra Pride**

You know skiing, that is why you chose EP gear. Now you can show your EP colors with Team Shirts and Team Caps. Order a total of three items and receive a poster free. Offer limited.

Wayne Grimditch signature shirts are 100% polyester, available in white and yellow, \$5.95 each. EP logo shirts are 100% cotton, available in orange and light blue, \$4.50 each. Team caps are 100% cotton, available in white only, \$4.95 each.

Name _____

Address _____

City _____ State _____ Zip _____

Print quantity in size and color boxes below **SCF**

ITEM	S	M	L	XL	COLOR	AMOUNT
GRIMDITCH SHIRT					WHITE	
					YELLOW	
EP LOGO SHIRT					ORANGE	
					BLUE	
TEAM CAP					WRITE ONLY	

(Washington residents add 5.4% Sales Tax) **TOTAL \$**

Mail check or Money Order to **COMPOSITE STRUCTURES CORP.**
930 S. Central, Kent, WA 98031

Detach coupon along dotted line and mail today.

SOUTH CENTRAL REGIONALS, Florence, Miss., August 6, 7, 8

SKI CLUBS

ARKANSAS:
Greers Ferry Lk Ski Klub, Inc.
Box 589
Heber Springs, Ark. 72534

Jonesboro Ski Club
1919 Sherwood
Jonesboro, Ark. 72401

Russellville Boat & Ski Club
1702 Bradley Lane
Russellville, Ark. 72801

Arkansas Water Ski Club
808 W. Second
Little Rock, Ark. 72201

Arkadelphia Ski Club
2066 Elaine Circle
Arkadelphia, Ark. 71923

LOUISIANA:

Progressive Skiers Water Ski Club
Box 1565
Leesville, La. 71446

Shreveport Aqua Katz
Water Ski Club
3014 Pines Road
Shreveport, La. 71109

Cajun Power Ski Team
9912 Great Smokey Ave.
Baton Rouge, La. 70814

Red River Rats Water Ski Club
Box 4277
Alexandria, La. 71301

MISSISSIPPI:

Lake Claiborne Ski Club, Inc.
Rt. 2, Box 38C
Port Gibson, Miss. 39150

Grenada Ski Club
844 Line St.
Grenada, Miss. 38901

Lake Ridgelea Ski Club
3405 Forest Hill Rd.
Jackson, Miss. 39212

Tombigbee Stump Jumpers
604 Gaywood Ave.
Columbus, Miss. 30067

Confederate Skiers
Box 235
Florence, Miss. 39073

OKLAHOMA:

Oklahoma State Univ. Ski Club
Box 311
Stillwater, Okla. 74074

Ardmore Ski Kats
1218 4th SW
Ardmore, Ok 73401

Sooner Skiers
312 Irving
Ponca City, Okla. 74601

MEN I	SLALOM		TRICKS		JUMPING			OVERALL		
	Buoys	Pl.	Points	Pl.	1st Jump	2nd Jump	3rd Jump	Pl.	Points	Pl.
Jay Bennett	38.5	4	3120	1	129	122	141	1	2415	1
Mark Norton	20.5	15	2100	3	Fall	115	120	5	1561	2
Jimmy Thompson	19	17	2760	2	108	Fall	Fall	10	1514	3
Bob Cumberland	41	3	180	18	Fall	107	Pass	11	1408	4
Jim Solomon	22.5	8	1160	7	92	101	Pass	12	1195	5
Terry Eberhardt	15	18	740	11	100	114	124	2	1186	6
Mike Lee	22.5	8	1080	9	100	Fall	100	13	1168	7
Allen Smith	22.5	8	1090	8	86	85	98	15	1151	8
Jimmy Wetz	32.5	6	620	13	67	76	71	21	1071	9
John Able	21	11	1010	10	Fall	91	Pass	18	1042	10
Chris Brinkman	21	11	530	15	Fall	97	100	14	1012	11
Gordon Hall	5.5	20	430	17	115	113	112	7	822	12
Chris Coeraham	3	21	---	---	Fall	Pass	Fall	---	---	---
Ricky Kirkemier	32.5	6	---	---	---	---	---	---	---	---
Gerald Hasket	2	23	---	---	121	121	Fall	3	---	---
E. J. Litinger	2	23	---	---	96	110	108	9	---	---
Danny Pooley	5	27	---	---	---	---	---	---	---	---
Steve Funk	12	19	---	---	---	---	---	---	---	---
John Jackson	43.5	2	---	---	---	---	---	---	---	---
Walter Daniel	2	23	---	---	---	---	---	---	---	---
Richard Blanchard	19.5	16	---	---	---	---	---	---	---	---
Bill Land	21	11	---	---	---	---	---	---	---	---
Steve Bauman	36	5	---	---	---	---	---	---	---	---
Michael Russell	2	23	---	---	---	---	---	---	---	---
Bill Berry	44	1	0	19	112	97	113	8	---	---
Bo Stemple	0	28	---	---	---	---	---	---	---	---
Barry Breux	21	11	---	---	---	---	---	---	---	---
Britt Medford	2.5	22	---	---	---	---	---	---	---	---
Chris Whitney	---	---	1910	4	107	115	111	6	---	---
Mark Harlan	---	---	1440	6	---	---	---	---	---	---
Glen Carimi	---	---	440	16	85	Fall	Fall	20	---	---
Russell Kutz	---	---	570	14	---	---	---	---	---	---
Sony Berry	---	---	1510	5	---	---	---	---	---	---
Brian Quaxtano	---	---	670	12	74	85	82	19	---	---
Les Brazzel	---	---	---	---	98	Pass	Fall	16	---	---
Gabriel Socias	---	---	---	---	Fall	113	121	4	---	---
Kevin Dickman	---	---	---	---	83	96	Pass	17	---	---

MEN II

Ronnie Martin	49	1	3240	1	113	118	125	1	2890	1
Danny Rowzee	34.5	3	1580	9	Fall	121	120	2	2058	2
Paul Risch	22	7	2380	4	85	Pass	90	4	1603	3
Ron Alton	21	8	2420	3	58	69	79	5	1483	4
Jim Barker	3	17	1290	10	116	120	119	3	1237	5
D. L. Helm	21	8	1260	11	Fall	Fall	Pass	8	820	6
Brad Whetstone	14	10	1070	13	44	Fall	52	7	763	7
Doug Howell	5	12	530	14	---	---	---	---	---	---
Joel Taylor	29	4	---	---	---	---	---	---	---	---
Mike Marquis	4	14	---	---	---	---	---	---	---	---
Tod Norrell	5	12	---	---	---	---	---	---	---	---
George Hazzard	4	12	---	---	---	---	---	---	---	---
Bo Rougeau	3.5	16	---	---	Fall	79	Fall	6	---	---
Tracy Pope	4	14	---	---	---	---	---	---	---	---
M. J. Fink	1	19	2240	5	---	---	---	---	---	---
Dick Osburn	---	---	1780	7	---	---	---	---	---	---
George Rook	---	---	2160	6	---	---	---	---	---	---
Lonnie Marchand	2	13	310	15	---	---	---	---	---	---
Buck Thompson	35.5	2	1150	12	---	---	---	---	---	---
Gilmore Lauderdale	27	6	160	16	---	---	---	---	---	---
Doyle Popp	8	11	1620	8	---	---	---	---	---	---
Stan Switzer	28.5	5	2670	2	---	---	---	---	---	---

WOMEN

Diane Ledford	43	1	1930	1	73	83	87	1	2107	1
Carol Solomon	2.5	7	860	2	60	64	68	2	708	2
Nikki Kinnear	2	8	780	3	Fall	38	52	3	506	3
Susan Helutz	18	4	490	5	---	---	---	---	---	---
Kathy Faulkner	---	---	310	7	40	Fall	47	4	---	---
Anne Bennett	13.5	5	730	4	---	---	---	---	---	---
Brenda Helms	20	3	470	6	---	---	---	---	---	---
Bonnie Funke	9.5	6	---	---	---	---	---	---	---	---
Judy Traitt	0	9	---	---	---	---	---	---	---	---
Cheryl Morgan	21.5	2	---	---	---	---	---	---	---	---
Karen Farris	---	---	---	---	Fall	Fall	Fall	---	---	---

NATIONAL COMMITTEES

RULES	Jerry Edwards, 502 Crestview, Marble Falls, Tex.
SKIER'S RATING	George Rook, Box 4416, Tyler, Texas 75701
MEMBERSHIP	Jeffry Armstrong, 844 S. Line, Grenada, Miss. 39801
JUDGE'S QUALIFICATION	Darrell Sallee, 1012 Maxwell, Ardmore, Ok 73401
BOAT DRIVER'S RATING	Floyd McCreight, 4208 Rivercrest, Austin, Tex. 78746
BYLAWS	Billy Reeves, Rt. 3, Box 61, Florence, Miss. 39073
TOURNAMENT	Lester Kirkemier, 19 Bauer Dr., N. Little Rock, Ark 72116
TECHNICAL	Buddy Williams, Rt. 3, Box 96, Florence, Miss. 39073
INTERNATIONAL ACTIVITIES	Eigin Faulkner, 1443 Durango, Houston, Tex. 77055
NAT'L TOURNAMENT SEEDING	Pete Salassi, Box 1137, Vicksburg, Miss. 39180
INTERCOLLEGIATE RULES	Charles Fontenot, 215 Cardinal Dr., Vidor, Tex. 77662
SAFETY COMMITTEE	Danny Rowzee, Box 1565, Leesville, La. 71446
INSURANCE STUDY	Bo Rougeau, Rt. 2, Box 276A, Boyce, La. 71409
EXECUTIVE & FINANCE	None
SKI CLUB	Jerry Edwards, 502 Crestview, Marble Falls, Tex. Jeanette Martin, 1218 4th SW, Ardmore, Ok 73401

SR. MEN	SLALOM		TRICKS		JUMPING			OVERALL	
	Buys	Pt.	Points	Pt.	1st Jump	2nd Jump	3rd Jump	Pt.	Points Pt.
Buck Brandon	41	1	2450	1	36	97	99	2	2374 1
Floyd McCreight	39	2	1440	3	81	85	88	5	1859 2
Charles Fontenot	31	7	710	7	106	96	104	1	1733 3
Jack Bright	33	6	780	6	84	91	97	3	1656 4
Darrell Sallee	3	10t	1110	4	Fall	76	80	7	903 5
Bob Caruthers	3	10t	600	8	85	Fall	89	4	861 6
Jerry Edwards	3	10t	1580	2	Fall	58	Fall	8	816 7
Ron Herring	23	9	900	5	---	---	---	---	---
Lester Kirkemier	.5	14t	---	---	---	---	---	---	---
Darth Cumberland	.5	14t	---	---	---	---	---	---	---
Bob Salmen	38.5	3	---	---	---	---	---	---	---
Charles Bauman	38	4	---	---	---	---	---	---	---
Vernon Gray	34.5	5	---	---	---	---	---	---	---
Clifton Jenkins	3	10t	---	---	---	---	---	---	---
Eddie Brown	30.5	8	---	---	---	---	---	---	---
Raymond Lopez	--	--	---	---	80	82	85	6	---
SR. WOMEN									
Jeffrey Armstrong	31.5	1	2040	2	Fall	81	Fall	1	2366 1
Peggy Thorne	24.5	3	2250	1	45	47	49	3	1712 2
Nita Reeves	28	2	1370	3	62	62	64	2	1710 3
Willie Allen	--	--	390	5	Fall	33	33	4	---
Betty Williams	21	4	770	4	---	---	---	---	---
Sara Cumberland	2	6	---	---	---	---	---	---	---
Margie Cumberland	3	5	---	---	Fall	Fall	31	5	---
Mary Jane Jenkins	1.5	7	---	---	---	---	---	---	---
BOYS									
Mark Cumberland	30.5	1	970	5	82	100	101	4	1757 1
Jim Williams	18.5	5t	180	10	108	105	100	2	1187 2
Don Caruthers	18.5	5t	830	6	77	Fall	84	6	1065 3
Russ Edwards	15	7	1420	4	Fall	65	64	12	966 4
Scott Cumberland	13.5	8	270	9	71	71	76	8	729 5
Steve Mahon	7	11	530	7	51	51	66	11	518 6
Jeff Cumberland	0	16	1490	3	89	95	94	5	---
Rafe Armstrong	11	10	440	8	---	---	---	---	---
David Martin	--	--	2700	1	---	---	---	---	---
K. C. Burton	22	4	2700	2	---	---	---	---	---
John Haskett	2.5	14t	---	---	109	110	109	1	---
Bruce Rivera	3.5	12	---	---	67	66	70	10	---
Alvin Kirkemier	38	2	---	---	---	---	---	---	---
Kevin Truitt	3	13	---	---	49	Fall	Fall	13	---
Jerry Rivera	3.5	14t	---	---	80	80	83	7	---
Richard Culver	13.5	9	---	---	Fall	69	76	9	---
Terry Rivera	22.5	3	---	---	Pass	85	102	3	---
GIRLS									
Gayle Rowzee	21	3	870	2	Fall	66	Fall	2	1176 1
Eva Ruth Wux	11	5	1290	1	Fall	58	58	3	1020 2
Becky Bridges	22	1	---	---	56	Fall	54	4	765 3
Patti Jenkins	3	6	590	3	62	70	67	1	754 4
Jessica Calhoun	14.5	4	380	5	46	54	49	6	724 5
Debbie Brandon	1.5	7t	470	4	Fall	Fall	46	8	406 6
Lyn Gray	--	--	180	6	---	---	---	---	---
Tracy Martin	22	2	---	---	Fall	47	Fall	7	---
Susie Truitt	1.5	7t	---	---	---	---	---	---	---
Nancy Harrington	--	--	---	---	Fall	55	Fall	5	---
JR. BOYS									
Jay Meinen	27	2	1270	2	65	69	71	1	1840 1
Kenny Thorne	20.5	4	1540	1	36	42	44	5	1450 2
Steve Kirkemier	38	1	240	5	Fall	52	54	2	1302 3
Tony Guice	4	5	310	4	Fall	47	49	3	522 4
Rick Edwards	2	6	480	3	28	45	44	4	519 5
Jerry Hicks	20.5	3	---	---	---	---	---	---	---
JR. GIRLS									
Leslie Thorne	30.5	1	2170	1	42	Fall	Fall	1	2245 1
Kay Sands	25.5	2	1680	2	Fall	36	36	4	1763 2
Karen Caruthers	1	4t	110	4t	33	Fall	37	3	300 3t
Janet Cozuthers	1	4t	110	4t	37	36	35	2	300 3t
Calli Armstrong	4	3	320	3	---	---	---	---	---

SKI CLUBS

TEXAS:

Beaver Pond Ski Club
Rt. 1, Box 8A
Grandview, Texas 76050

Watergate Ski Team
10000 N.W. Frwy.
Houston, Texas 77092

First Neches Ski Club
215 Cardinal Dr.
Vidor, Texas 77682

Rio Villa Ski Club
19327 Rio Villa Dr., Rt. 24
Houston, Texas 77049

Lake Murvaul Ski Masters
Rt. 2, Box 20-D
Carthage, Texas 75633

Lone Star Ski Team
6019 Westridge Ave. #121
Ft. Worth, Texas 76103

Austin Ski Club
1706 Corona Drive
Austin, Texas 78723

Texas A&M Water Ski Club
Box 5688
c/o Student Finance Center
College Station, Texas 77884

WORK!

WORK!

WORK!

ATTENTION!

'77 Slaloms • Tricks • Jumpers • Accessories

EP . . . O'Brien . . . Cypress Gardens . . . Correct Craft
Maherajah . . . Terry . . . Connelly . . . Pro-Line . . . Jobe
Stinger . . . LaPoint . . . Ropes . . . Gloves . . . Wetsuits

CALL Hal Hamilton
Qualified Tournament Skier (205) 323-4461

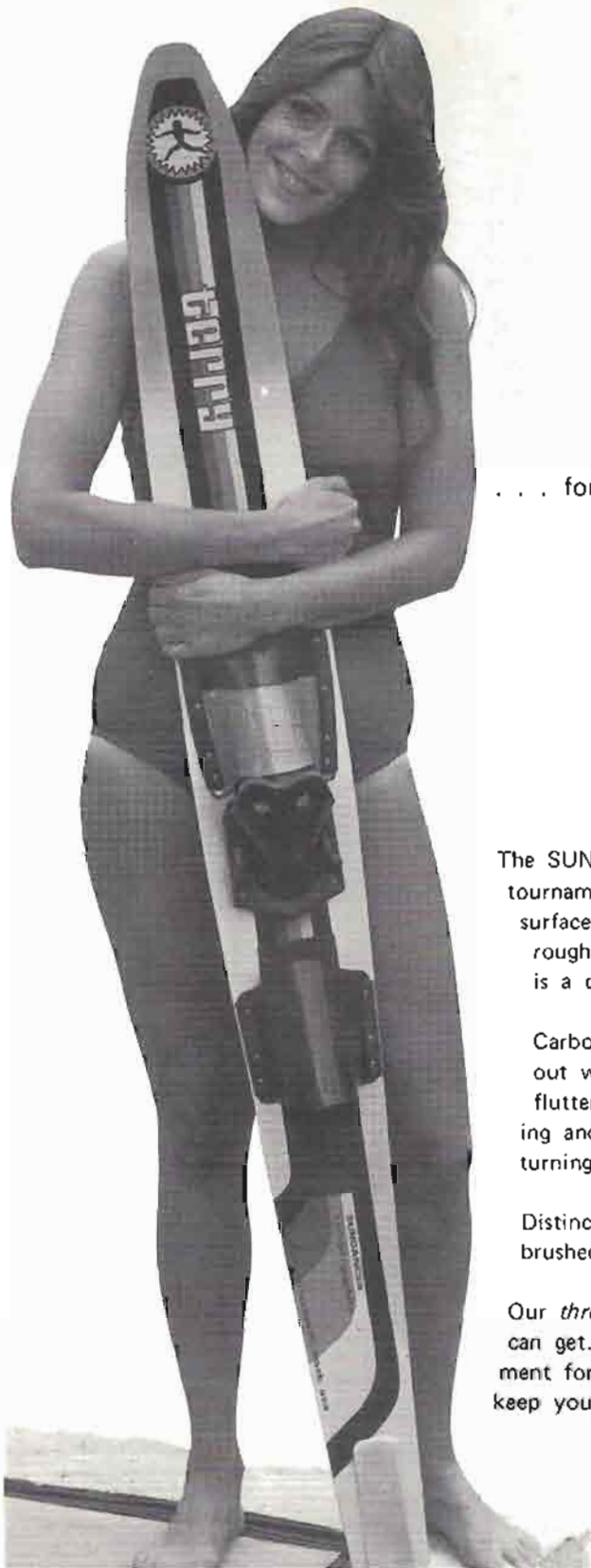
Specials to AWSA & Club members
Free Shipping on prepaid orders. Or COD

"Serving the recreation and competitive skier
in quality equipment and service"

Roberts Sporting Goods

200 So. 24th St.

Birmingham, Ala. 35233



... for **HOLDING POWER** — Terry **SUNDANCER** with **POSITEX**.

The SUNDANCER has superb performance and control for the expert and tournament skier. The "Positex" no-slip tunnel is a breakthrough in running surfaces, dramatically increasing holding power and braking ability even in rough water; combined with superior rocker and side cut design, the result is a difference you can feel immediately.

Carbon graphite reinforcement adds tremendous strength and stiffness without weight, resulting in faster rebound for superior dampening and reduced flutter. The bevels are molded 45 degrees at midsection for stable tracking and spray deflection, and rounded from the rear binding back for fast turning.

Distinctive red, yellow, orange and black graphics baked onto marine grade brushed aluminum make the SUNDANCER look as great as it performs.

Our *three year*, limited warranty gives you the best warranty coverage you can get. Since our skis are virtually trouble free, we allow in-store replacement for defects covered under warranty at your Terry dealer. Designed to keep you skiing, not waiting — That's **HOLDING POWER!**

Send for your **FREE** color brochure today — showing all 4 slalom models and ski accessories.

Terry Ski Company, 1565 NW Mall, Issaquah, Wa. 98027

Please send free color brochure

Name _____
Address _____
City _____ State _____ Zip _____

SLALOM TIMES - .1 Second			
MPH	Actual	Allowed Times	
		(± 1 mph)	(± ½ mph)
22	26.3	25.2 - 27.5	25.7 - 26.9
24	24.1	23.2 - 25.1	23.7 - 24.6
26	22.3	21.5 - 23.1	21.9 - 22.7
28	20.7	20.0 - 21.4	20.4 - 21.0
30	19.3	18.7 - 19.9	19.0 - 19.6
32	18.1	17.6 - 18.6	17.9 - 18.3
34	17.0	16.5 - 17.5	16.8 - 17.2
36	16.1	15.7 - 16.5	15.9 - 16.3
SLALOM TIMES - .01 Second			
MPH	Actual	Allowed Times	
		(± 1 mph)	(± ½ mph)
22	26.33	25.19 - 27.59	25.75 - 26.95
24	24.14	23.17 - 25.19	23.65 - 24.65
26	22.28	21.46 - 23.17	21.86 - 22.72
28	20.69	19.98 - 21.46	20.33 - 21.07
30	19.31	18.69 - 19.98	19.00 - 19.64
32	18.11	17.56 - 18.69	17.83 - 18.39
34	17.04	16.55 - 17.56	16.79 - 17.29
36	16.09	15.66 - 16.55	15.87 - 16.32
Third Buoy Slalom Times - .1 Second			
34	7.2	7.0 - 7.4	7.1 - 7.3
36	6.8	6.6 - 7.0	6.7 - 6.9
Third Buoy Slalom Times - .01 Second			
34	7.17	6.97 - 7.39	7.07 - 7.28
36	6.77	6.59 - 6.97	6.68 - 6.87
Jump Times - .1 Second			
22	8.8	8.4 - 9.3	8.6 - 9.0
24	8.1	7.8 - 8.4	7.9 - 8.3
26	7.5	7.2 - 7.8	7.3 - 7.6
28	6.9	6.7 - 7.2	6.7 - 7.1
30	6.5	6.3 - 6.7	6.3 - 6.7
32	6.1	5.9 - 6.3	6.0 - 6.2
33	5.9	5.7 - 6.1	5.8 - 6.0
34	5.7	5.6 - 5.9	5.6 - 5.8
35	5.6	5.4 - 5.7	5.5 - 5.6
Jump Times - .01 Second			
22	8.83	8.45 - 9.25	8.63 - 9.04
24	8.10	7.77 - 8.45	7.93 - 8.27
26	7.47	7.20 - 7.77	7.33 - 7.62
28	6.94	6.70 - 7.20	6.74 - 7.14
30	6.48	6.27 - 6.70	6.28 - 6.68
32	6.07	5.89 - 6.27	5.97 - 6.17
33	5.89	5.72 - 6.07	5.80 - 6.00
34	5.72	5.55 - 5.89	5.63 - 5.83
35	5.55	5.40 - 5.72	5.45 - 5.65

D. L.'S SKI SHOP

2305 E. Johnson
 JONESBORO, ARKANSAS 72401
 501-972-1060

EP
 JOBE
 MAHA
 STINGER
 O'BRIEN
 CONNELLY
 CYPRESS GARDENS

JUMPERS TRICKS SLALOMS

We have on stock a complete line of EP & Pro-Line Products

Discount to all AWSA Members

Pro-Line Ropes
 Ski Gloves
 Ski Bags
 Trick Ropes
 T-Shirts
 Plate Binders
 Ski Vests

SCR SKIERS – 1976 NATIONALS

Open Men	Jay Bennett	Jump
Men I	Rick Kirkemier	Slalom
	Bob Cumberland	Slalom
	John Jackson	Slalom
	Jay Bennett	Slalom, Tricks
	Jim Thompson	Tricks
	Sonny Berry	Tricks
	Gerald Haskett	Jump
	John Able	Jump
	Terry Eberhardt	Jump
Men II	Ronnie Martin	Slalom, Tricks, Jump
	Danny Rowzee	Slalom, Tricks, Jump
	Buck Thompson	Slalom
	Ron Alton	Tricks
	Jim Barker	Jump
	Paul Risch	Tricks
	Stan Switzer	Tricks
Sr. Men	Floyd McCreight	Slalom, Tricks, Jump
	Buck Brandon	Slalom, Tricks, Jump
	Vernon Gray	Slalom
	Charles Fontenot	Slalom, Jump
	Bob Salmen	Slalom
Women	Diane Ledford	Slalom, Tricks, Jump
Sr. Women	Jeffry Armstrong	Slalom, Tricks, Jump
	Nita Reeves	Slalom, Tricks, Jump
	Peggy Thorne	Slalom, Tricks
Jr. Boys	Jay Meinen	Slalom, Tricks, Jump
	Steve Kirkemier	Slalom
	Kenny Thorne	Tricks
Boys	Terry Riviera	Slalom
	Mark Cumberland	Slalom
	Jeff Cumberland	Slalom
	Alvin Kirkemier	Slalom
	Dave Martin	Tricks
	John Haskett	Jump
	Kenneth Burton	Tricks
	Jim Williams	Jump
Jr. Girls	Dawn Sands	Slalom, Tricks
	Leslie Thorne	Slalom, Tricks
	Cali Armstrong	Tricks
Girls	Gayle Rowzee	Slalom
	Patti Jenkins	Jump

ASK AB...



Ab Crosby, Jr., Hydrodyne Boats

Q: Is Hydrodyne getting back into the Tournament Circuit?

Ab: Yes we are, we are getting back into the Tournaments with more boats than ever before. We have boats in every region; in some regions we do not have as many as we would like; we are looking for qualified people who will help us rectify that shortly.

Q: What is the single most important thing that you want to get across to the skiers?

Ab: That would have to be the amount of work we put into the boat. The design looks basically the same as the first one we built, but the 1976 & 1977 perform a lot better than the previous years; the boat tricks better, the wake is better; it's just a better boat. You will just have to try it to appreciate it.

Ab: We feel that the serious Tournament Skier wants a tow boat with a superb tournament wake, unique styling, faultless - quiet performance, quality construction, daily dependability, economy. We feel that Hydrodyne has it all. At a price the skier can afford. Hydrodyne is the alternative.

HYDRODYNE TOURNAMENT SKIER

Outboard or Inboard/Outboard

Hydrodyne Boats

Box 65, Spencerville, Indiana 46788
(219) 238-4278

THE INCOMPARABLE TOURNAMENT SKIER

AMERICAN WATER



SKI ASSOCIATION

7TH STREET & AVENUE G SOUTHWEST

WINTER HAVEN, FLORIDA 33880

TELEPHONES: (813) 293-4579 AND 294-1248

WILLIAM D. CLIFFORD, EXECUTIVE DIRECTOR

After Dec. 15, 1976-324-4341

February 18, 1977

OFFICERS

David W. Luke, President
1505 King George Blvd.
Ann Arbor, Mich. 48104
Don Borrer, Ch. of the Board
1225 Dublin Road
Columbus, Ohio 43215
Lex Carroll, Vice President
Adams Road
Oakham, Mass. 01068
William H. Grindtich, Jr., Treasurer
923 Hillsboro Mile A1A
Pompano Beach, Fla. 33062
Dr. Jack W. Horton, Secretary
166 W. Longden
Arcadia, Calif. 91006

REGIONAL EXECUTIVE VICE PRESIDENTS

Nito Quitevis, Midwest
450 Horseshoe Dr.
St. Paul, Minn. 55112
Robert K. Corson, East
29 Alpine Trail
Sparta, N. J. 07871
Jerry Edwards, South Central
502 Crestview
Marble Falls, Texas 78654
Beverly Owen, South
117 Trail East
Hendersonville, Tenn. 37075
Louise Fox, West
300 Vernon
Oakland, Calif. 94610

DIRECTORS

James R. Lauzon
9409 W. Lawrence Ct.
Schiller Park, Ill. 60176
Don Borrer
1225 Dublin Rd.
Columbus, Ohio 43215
Richard L. Neck
5139 Coyle
Skokie, Ill. 60076
Lex Carroll
Adams Rd.
Oakham, Mass. 01068
Lee Merzhon
P. O. Box 188
Williamsburg, Va. 23185
Henry Miner
107 Plaxdale Rd.
Liverpool, N. Y. 13088
Charles Fontenot
215 Cardinal Dr.
Vidor, Texas 77662
Floyd McCreight
4206 Rivercrest
Austin, Texas 78746
Darrell Saltee
1012 Maxwell
Ardmore, Okla. 73401
C. W. Lowe, Jr.
225-7th St. West
Birmingham, Ala. 35204
Elmer Stalling
482 Kennwood Ave.
Merritt Island, Fla. 32952
Dr. David F. Watson
710 Crescent Ave.
Greenville, S. C. 29601
Dale St. John
Box 525
Fall River Mills, Calif. 96029
Dr. Jack Horton
166 W. Longden
Arcadia, Calif. 91006
Dick Marlow
2535 Arroyo Ave.
Pinole, Calif. 94564

HONORARY VICE PRESIDENTS

FOR LIFE
Charles R. Sligh, Jr.
Richard D. Pope, Sr.
Leland G. Sutherland

HONORARY VICE PRESIDENTS

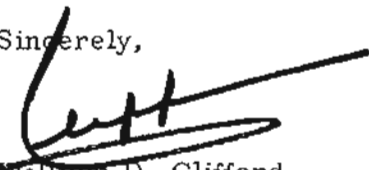
Jack Andersen
William P. Barlow, Sr.
Thomas H. Perkins
Howard H. Callaway
Charles A. Johnson
Marvin L. Rothenberg
Dan Ibsen
William P. Barlow, Jr.
B. J. Lynn
G. Allen Bobolz
Peter A. Salassi
William D. Clifford
C. W. (Bill) Wenner

Dear Members of the South Central Region:

A new era has been initiated for water skiing. On January 22, 1977, the new AWSA Headquarters building, with space for a Water Ski Museum-Hall of Fame, was dedicated in Winter Haven, Florida. This event symbolizes the work and dedication of all AWSA members. It also represents a bright future for the sport and our Association.

This Regional Guide, with its long list of tournaments, represents an exciting skiing season ahead for the South Central. Championships will be won, records will be broken, and most important--fun will be had by all those who love the sport. This year the representatives of our five regions will be competing in the National Tournament in Berkeley, California. This is also a world tournament year with the Championships being held in Milan, Italy in September. Competition will be keen for our top skiers in these events. The skiing will be no less exciting for our many novice skiers and superstars-to-be. I wish every skier the very best during the 1977 skiing season.

Sincerely,


William D. Clifford
Executive Director

WDC/pb

1939 — Our 38th Year — 1977
MEMBER FEDERATION OF WORLD WATER SKI UNION



Frank Pillsbury Presents...
The most complete
water ski pro shop
in the southwest.

Boats . . . Sea Ray, Mastercraft powered by Mercury outboards and Mercruiser stern drives.

Skis . . . All the top names including O'Brien, EP Hart, Maherajah, Western/Stinger, Jobe, Pro-Line plus all kinds of trick, and hot dog acrobatic skis.

Custom bindings . . . Personally fitted for you by our Ski Shop Pro, Dave Fortlage.

Everything that's got anything to do with water skiing . . . wet suits, warmup suits, super suits, gloves, ropes, T-shirts, bags . . . everything.



ASK ABOUT AWSA DISCOUNTS

Frank Pillsbury

9300 Harry Hines, Dallas, Texas 75220. (214) 357-1735

Dallas Correct Craft

817-265-3619

The Largest Seller of Ski Nautiques in the Southwest

Six used 1976 Ski-Nautiques with Trailer and new warranty, all color interiors available **\$6,800.00**

One 1977 Demo Ski-Nautique, 350 omc. Red interior, small lettering, padded motor box, internal mufflers and stern ladder with custom trailer and new warranty. **\$8,000.00**



**15% to 30% Off
on Competition Ski-Equipment to Awsa Members**

CONNELLY
STINGER
PRO-LINE

SKI-MASTER

JOBE
EP
CYPRESS GARDENS

PRE-SUMMER SPECIALS WHILE IN STOCK.

1976 EP Jumpers w/S. G. Plates (70" and 72")	\$220.00
1976 EP H. C. Tricks Adj. or S. G. Plates (40" 42")	170.00
1976 Connelly Tricks w/Adj. Bindings 40" only	120.00
Ski-Master Professional w/Pro Adj. or Fixed Binding	150.00
Ski-Master Professional w/Pro Plate	160.00

All prepaid or COD orders over \$125.00 Shipped Free
2300 Lexington • Arlington, Texas 76014 • 817-265-3619

(MAY 28-29)

LEESVILLE JAYCEE 8th ANNUAL NOVICE & INTERCOLLEGIATE SKI TOURNAMENT

Sponsor: Leesville Jaycees
Co-Sponsor: Progressive Skiers WSC
Date: May 28-29

- Weekend Activities:
- A. Novice tournament: see information below.
 - B. Intercollegiate tournament: All teams must be entered by May 27, 8:00 p.m. (no teams will be accepted after the deadline.) Entry must include names of team members, order of skiing, and events skiing in. Alternated replacement of team members will be accepted Saturday morning. Write for entry forms.
 - C. Ski Show tournament: starts 12:00 noon Sunday, May 29. Entry deadline—May 25. Limited to first six clubs. Write for more information and entry forms.
 - D. All most everything goes team competition: starts Sunday afternoon, May 29 between ski shows. Entry deadline Sunday noon, May 29. Write for additional information and entry forms.

Tourn. Class: This tournament will be combined Novice & Intercollegiate. An intercollegiate skier has the option to ski both intercollegiate and novice if he qualifies for novice classification. A skier skiing both classes will only ski once. His single performance will be scored for both classes. Dual events will be conducted for slalom and tricks.

Entry Fee: \$10.00 Novice, \$7.00 Intercollegiate. There will be an admission charge at the gate. This gate charge will go toward your entry fee, so when you register for the tournament you will only pay the difference. All contestants will get a free T-Shirt. Do not pay your entry fee in advance.

Location: Lake Vernon at Spillway Park, Leesville, Louisiana, five miles west of Leesville on Highway 8. (camping facilities available at site). Motel Accomodations—Ross Continental Motor Lodge, Leesville, Louisiana, Phone 239-2612, Redwood Motel, (318) 239-2677, GBI Courts, (318) 239-3671. All on Highway 171 South.

Entry Requirements: Novice entry rules will be enforced.
Rule Exceptions: Intercollegiate rules will be used for all divisions. The following is the basic difference between intercollegiate and AWSA rules.
SLALOM-A) Plus buoys count as consecutive buoys for 1st two minimum starting speed passes only.
B) Minimum starting speeds: Women—22MPH, Girls—20MPH, Boys and Men 26MPH.
Tricks-A) One 20 second pass
B) Neophyte tricks can be used in all divisions, except Mens.
Jumping-A) Ramp height set at 5 feet for all divisions.
B) Boat speed maximum 32 mph for Men, 28 mph for all other divisions.

Mail Entry to: Danny Rowzee, P.O. Box 1565, Leesville, Louisiana 71446.
Awards: Novice 1st, 2nd, 3rd, each event, 1st overall. Intercollegiate The standard 17 trophies.
Divisions: Boys up to 17. Girls up to 17. Men 17 and over. Women 17 and over.
Schedule of Events: 8:00 AM Saturday May 28, 1977

Phase I		Phase II
Dual Events		
Slalom	Tricks	Jumping
Men	Boys	Boys
Boys	Girls	Girls
Girls	Women	Women
Women	Men	Men

Events not completed on Saturday will be carried over to Sunday. Starting time: 7:00 AM.

Don't forget the big dance in the sand Saturday Night.

NATIONAL TOURNAMENT REFLECTIONS

At the Nationals in Miami in August, we had 38 skiers compared to 23 skiers last year in Tomahawk. There were 358 entries at Miami. Our best overall placement was a third by Ronnie Martin in the Men II division. Jeffry Armstrong barely missed a third in the Sr. Women overall.

PLACEMENTS WERE:

- LESLIE THORNE — Jr. Girls — 5th Slalom, 4th Tricks
- STEVE KIRKEMIER — Jr. Boys — 4th Slalom
- DIANE LEDFORD — Women — 4th Slalom
- JOHN JACKSON — Men I — 2nd Slalom
- RONNIE MARTIN — Men II — 4th Slalom
- JIM BARKER — Men II — 4th Jumping
- JEFFRY ARMSTRONG — Sr. Women — 4th Slalom — 3rd Jumping
- NITA REEVES — Sr. Women — 5th Slalom
- PEGGY THORNE — Sr. Women — 5th Tricks

(MAY 29, 1977)

ARKANSAS NOVICE

Sponsored by Arkansas Water Ski Club
May 29, 1977

- Location: Old Willow Beach (6 miles S.E. of North Little Rock on I-40, South on State Highway #130)
- Entry Fees: \$7.00 one event, \$8.00 two events, \$9.00 three events; late entry \$2.00
- Deadline: Must be received by May 26, 1977
- Mail Entries: Brenda Helms, Route 3, Box 432-A, Jonesboro, Arkansas 72401
- Class: Non-Sanctioned; all events
- Trophies: 1st, 2nd, 3rd, each event; no overall
- Camping: Space available at tournament site; electricity available, but no water
- Motels: Holiday Inn, Days Inn, Ramada Inn in North Little Rock
- Divisions:
1. Novice Men — All ages
 - Slalom — minimum starting speed 24 mph, if make 6 buoys at 28 mph will be moved into men
 - Tricks — If trick above 525 points will be moved into men
 - Jump — 5 foot ramp, 30 mph maximum speed, if jump 60 feet will be moved into men
 2. Men — All ages, cannot have placed in event skiing in regular sanctioned tournament during last 5 years, jump 5 foot ramp at maximum speed of 30 mph.
 3. Novice Women — All ages, cannot have placed in regular sanctioned tournament in last 5 years, or placed 1st. in 1976 Arkansas Novice in event skiing

SCHEDULE OF EVENTS

8:00 a.m.

Novice Men Slalom	Novice Men Tricks	Novice Men Jump
Novice Women Slalom	Novice Women Tricks	Novice Women Jump
Men Slalom	Men Tricks	Men Jump

WORK!!!

WORK!!!

WORK!!!

(JUNE 3, 4, 5, 1977)

PLUM NELLY, LTD.

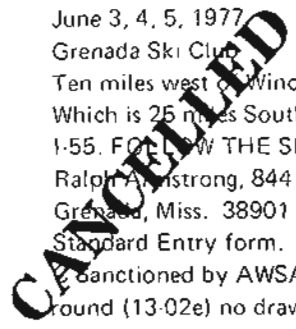
- Date: June 3, 4, 5, 1977
- Sponsored by: Grenada Ski Club
- Location: Ten miles west of Winona, Miss. Which is 25 miles South of Grenada on I-55. FOLLOW THE SIGNS CLOSELY!
- Entries to: Ralph Armstrong, 844 Line, Grenada, Miss. 38901
Standard Entry form.
- Class: Sanctioned by AWSA. Three rounds round (13-02e) no draw.
- Officials: Chief Judge, Pete Salassi; Safety Director, Ron Cannon; Chief Boat Driver, Billy Reeves; Registrar, Sharon Cannon.
- Camping: Limited space directly on site—primitive type—no water or electricity.
- Motels: 82-55 Motor Lodge, Winona, Mississippi (10 miles)
- Schedule: Friday, 3rd., 7:00 a.m. —Female, Male —Slalom, Tricks, Jump
Saturday, 4th, 7:00 a.m. —Male, Female —Tricks, Slalom, Jump
Sunday, 5th, Time announced —Female—Male (seeded) Slalom, Tricks, Jump

Each entry will be required to work at this tournament in some capacity. Entry will be paid at the time of sending in the form. Trick lists will also accompany entry; otherwise you will not be considered as "entered". 9 copies for prescoring. (You can change it after you get to site.)

**SONNY BERRY'S
TRICK SCHOOL
& TRAINING CAMP**

Maximum enrollment 5 skiers per 5 day week. For rates and additional info, Write or call Sonny

6609 Lexington Rd. Austin, Texas 78731
512/453-5308



(JUNE 11th and 12th)

BEAUMONT OPEN

Sponsors: First Neches Ski Club
 Date: June 11th and 12th
 Location: Beard's Lake 1/2 mile out of Beaumont East on IH 10
 Class: C & I
 Entry Fee: \$12.00 single, \$24.00 family, \$1.00 each additional.
 Deadline: Entries must be postmarked no later than Wednesday, June 8th. Late fee: \$5.00
 Awards: 1st, 2nd, and 3rd, & overall for each event
 Camping: Limited space available at site.
 Mail entry to: Marilyn Lynn, 940 Aery, Vidor, Tx. 77662

SCHEDULE OF EVENTS

Sat. 7:30 a.m.	Saturday	Sun. 7:30 a.m.
Boys Slalom	Boys Tricks	Jr. Boys & Jr. Girls Jump
Men I Slalom	Men I Tricks	Women Jump
Men II Slalom	Men II Tricks	Sr. Women Jump
Sr. Men Slalom	Sr. Men Tricks	Girls Jump
Vet. Men Slalom	Vet. Men Tricks	Sr. Men Jump
Women Slalom	Women Tricks	Vet. Men Jump
Sr. Women Slalom	Sr. Women Tricks	Boys Jump
Girls Slalom	Girls Tricks	Men II Jump
Jr. Boys & Jr. Girls Slalom	Jr. Boys & Jr. Girls Tricks	Men I Jump

(JUNE 17, 18, 19)

HOOVER LAKE INVITATIONAL

Sponsored by Confederate Skiers

Tournament
 Chrm: Darth Cumberland
 Rt., 3, Box 300E
 Florence, Miss. 39073

(JUNE 18 & 19)

**SHREVEPORT AQUA KATZ
NOVICE & FIGURE 8 BAREFOOT**

Sponsor: Aqua Katz Ski Club
 Date: June 18 & 19
 Location: Port of Bistneau on Lake Bistneau
 Entry Fee: \$10.00 Ski all events or \$7.50 for one event \$5.00 Barefoot
 Entry deadline midnight June 17. Late entry \$1.
 Requirements: Must not have won 1st, 2nd, or 3rd. in a sanctioned tournament in the past five years. Use standard AWSA entry form, if not available contact tournament directors for entry form.
 Awards: Ski - Trophy for 1st, 2nd, & 3rd. each div.
 Barefoot - Trophy for 1st. each class Medallion for 2nd.

Divisions.	Ski- Girls 17 & under Women 18 & over Boys 14-17	Jr. Boys 13 & under Men I 18-22 Men II 23 & over
Barefoot-	165 lb. & under	165 lb. & over

SCHEDULE

8:00 a.m. SHARP

Saturday	Sunday
----------	--------

DUAL EVENTS

Slalom	Tricks	Jumping
Men I	Jr. Boys	Jr. Boys
Women	Girls	Girls
Jr. Boys	Boys	Boys
Boys	Women	Women
Girls	Men II	Men II
Men II	Men I	Men I

Barefoot eliminations last event Sat. finals last event Sun.

Accommodations: Limited space for camping on site other space available Lake Bistneau State Park. Motels in nearby Minden.

Concessions: Food and drinks available at tournament site.

Mail Entries: Tournament Directors
 Gary L. Loftin
 5417 Hearne Ave.
 Shreveport, La. 71108
 Ph. 1-318-635-1290

Wayne Rials
 5307 Hearne Ave.
 Shreveport, La. 71105
 Ph. 1-318-635-3599

Direction to site: East of Shreveport on I-30 to Minden Sibley exit. South on Hwy 7 to port of Bistneau.

work!

work!

work!

(JUNE 25, 26)

LAKE RAMSAY OPEN

Date: June 25, 26
 Sponsor: Bogue Falaya Ski Club
 Location: Lake Ramsay Campgrounds
 Class of
 Tournament: Class C & I
 Entry
 Requirements: Entry Fee \$13.00, "Regional Policy for Family". Deadline June 18. Late entry \$2.00 additional. AWSA membership (except novice)
 100 Limit
 Divisions: All divisions except open
 Awards: First, 2nd, 3rd and overall in each division
 Practice: None
 Accomodations: Site Camping \$5.50 per night with facilities. Nearby hotels, motels in Covington, La.
 Note: Spectators fee \$1.00 excluding campers and tournament participants
 Directions: On Louisiana Highway No. 25, 3 miles north of Covington, 68 miles east of Baton Rouge on U.S. 190, 40 miles north of New Orleans over Lake Ponchartrain Causeway.

Entries To: Mrs. Walter Gallinghouse
 2315 So. America St.
 Covington, La. 70433

	JUNE 25	JUNE 26
Sr. Men Slalom	Novice Men	Novice Women Slalom
Boys Slalom	Tricks	Men II Slalom
Jr. Girls Slalom	Sr. Women	Men I Slalom
Jr. Boys Slalom	Tricks	Vet. Men Slalom
Girls Slalom	Women Tricks	Novice Men Slalom
Sr. Women Slalom	Jr. Boys Jump	Sr. Men Tricks
Women Slalom	Jr. Girls Jump	Men II Tricks
Vet. Men Tricks	Girls Jump	Men I Tricks
Jr. Girls Tricks	Boys Jump	Novice Women Jump
Jr. Boys Tricks	Womens Jump	Sr. Men Jump
Girls Tricks	Sr. Women Jump	Men II Jump
Boys Tricks	Vet. Men Jump	Men I Jump
	Novice Men	
	Jump	

WORK!!! WORK!!! WORK!!!

LARGEST STOCK OF SKIS

In The South Central Region

EP — WESTERN — STINGER — VECTOR — O'BRIEN — TERRY — CONNELLY
 La POINT — MAHERAJAH — PRO-LINE — CYPRESS GARDENS — CORRECT CRAFT

Complete Selection Of All Sizes And Models Always
 Binders — Fins — Ropes — Trick Bridles — Gloves
Now accepting orders for limited supply of Vectors

The Sport Shop

8055 Airline Hwy.
 Baton Rouge, La. 70815

[504] 927-2600

Ask for John Parnell
 or Jay Bennett

*Louisiana's only
 authorized
 Correct Craft Dealer*

*We can ship
 UPS — C.O.D.
 Freight Prepaid*



We Specialize in Ski Tournament Trophies

- ☆ Special designed trophies and plaques for ski tournaments
- ☆ Super discounts to AWSA-affiliated clubs
- ☆ Prompt delivery
- ☆ Free engraving
- ☆ Send for free catalog

TOLEDO BEND TROPHY SALES

P.O. Box 1565, Leesville, La. 71446
Phone: (318) 238-0821

BENNETT WATER SKI SCHOOL & TRAINING CAMP

- * *On a beautiful 11 mile lake*
- * *4 skier limit per week*
- * *Ski tuning and Customizing*
- * *Tournament equipped facilities*
- * *May 2 thru August 12*
- * *Qualified instructors for all levels of water skiing*
- * *Party barge available for rent.*



To apply for an application call or write:

Jay & Anne Bennett
Box 236
Ventress, Louisiana 70783
Phone [504] 638-9831

(AUGUST 5, 6 & 7)

SOUTH CENTRAL REGIONALS

Sponsored by: Progressive Skiers Water Ski Club
 Date: August 5, 6 & 7
 Tournament site: Leesville, La.
 Class: Regionals
 Entry Requirements: 2nd Class —Juniors, 1st class all others.
 Location: Vernon Lake at Rowzee Roost west side of lake, 5 miles west of Leesville on Hwy 8, follow signs off Hwy.
 Registration: 5:00-8:00 p.m., Aug. 4 and 6:30 a.m., Aug. 5
 Entry Fee: \$16.00 (Family Plan \$2.00)
 Entry Deadline: Postmark by Aug. 1, 1977 —Late entry \$10.00 Penalty.
 Mail Entries To: Danny Rowzee, P.O. Box 1565 Leesville, La. 71446
 Practice: None
 Camping: Limited space at site. No electricity. First come first served. No reservations.
 Hotel Headquarters: Ross Continental Motor Lodge, Hwy 171 South, Phone 318-239-2612. The SCR Annual meeting will be held at this motel. It is recommended that reservations be made at least two weeks in advance.

Note:

1. Slalom speeds declared before going out to ski.
2. No event will be started on Sat. that will last past 6:00 p.m.

SCHEDULE OF EVENTS

Friday 8:00 a.m.	Saturday 8:00 a.m.	Sunday 9:00 a.m.
Slalom	Slalom	Jumping
Jr. Boys	Men II	Girls
Jr. Girls	Boys	Women
Men I		Open Women
Open Men	Tricks	Sr. Women
Sr. Men	Girls	Boys
Veteran Men	Women	Men II
Girls	Open Women	Men I
Women	Sr. Women	Open Men
Open Women	Men I	
Sr. Women	Open Men	
Tricks	Jumping	
Sr. Men	Jr. Boys	
Veteran Men	Jr. Girls	
Boys	Sr. Men	
Jr. Boys	Veteran Men	
Jr. Girls		
Men II		

Ardmore Marine, INC.

910 Lake Murray Drive
Ardmore, Oklahoma 73401

INVADER

Glassmaster[®]

SKI BOATS

SKIS, JACKETS, ACCESSORIES

EP
 MAHERAJAH
 JOBE
 CYPRESS GARDENS
 SKI MASTER
 STEARNS



EVINRUDE *E*
first in outboards

MasterCraft

Tournament Boats

20% DISCOUNT TO AWSA MEMBERS

Darrell Sallee

AC 405 223-9400

(AUGUST 13, 14)

BOGUE FALAYA BAREFOOT

Sponsor: Bogue Falaya Ski Club
 Date: August 13,14
 Location: Old Landing, Covington, La.
 Class of
 Tournament: B Sanctioned
 Entry
 Requirements: AWSA Current Membership
 Divisions: Boys, Girls, Men, Women, Sr. Men
 Awards: First, 2nd, 3rd, and overall in each division.
 Jump Practice: As time permits on the 13th, \$2.00 three approaches
 Entry Fee: \$10.00 for one event, \$15.00 two or more events
 Special Interest: New Australian designed barefoot jump
 Entries To: Mrs. Walter Gallinghouse
 2315 South America St.
 Covington, La. 70433
 Accommodations: Lake Ramsay campgrounds north of Covington, La., nearby hotel and motel

Boys Wake Crossing	Boys Starts
Girls Wake Crossing	Girls Starts
Sr. Men Wake Crossing	Sr. Men Starts
Women Wake Crossing	Women Starts
Men Wake Crossing	Men Starts
Boys Tricks	Boys Jump
Girls Tricks	Girls Jump
Sr. Men Tricks	Sr. Men Jump
Women Tricks	Women Jump
Men Tricks	Men Jump
Jump Practice	

Events will begin promptly at 8:00 a.m.
Here is your chance barefooters

(SEPT. 10-11)

WATERGATE 2 ROUND SLALOM & TRICK

Sponsor: Watergate Ski Team
 Location: Clear Lake, Kemah, Texas
 Directions: From Houston, south on I-45, take League City Exit, east through League City, turn left on Davis Rd. (just past Clear Creek High School, on left side). Follow signs.
 Class: C & I
 Entry Fee: \$10 one event, \$15 two events
 Deadline: 30 min. before event
 Requirements: Current AWSA Membership (except Novice Div.) Novice cannot have rating higher than 2nd class or have placed 1st, 2nd, or 3rd in sanctioned tournament in past three years.
 Registration: Saturday, 7 a.m., tournament starts promptly 8 a.m.
 Camping: Limited space available.

Entries: Joel Taylor, Box 3766,
Houston, Tx 77001

SCHEDULE

Saturday — 1st Round

Slalom: Men I	Tricks: Jr. Boys
Men II	Jr. Girls
Women	Sr. Women
Boys	Sr. Men
Sr. Men	Boys
Sr. Women	Women
Jr. Girls	Men I
Jr. Boys	Novice Men
Novice Men	Men II

Second round will be run in same order with starting order reversed in each event. Any event not finished on Saturday will be finished Sunday.

(OCT. 22-23)

WATERGATE THREE-ROUND TRICKS

Sponsor: Watergate Ski Team
 Location: Clear Lake, Kemah, Texas
 Directions: From Houston, south on I-45, take League City Exit, east through League City, turn left on Davis Rd. (just past Clear Creek High School, on left side). Follow signs
 Class: C & I
 Entry Fee: \$10 three rounds.
 Deadline: 30 min. before event
 Requirements: AWSA membership
 Registration: Saturday, 7 a.m., tournament starts promptly at 8 a.m.
 Camping: Limited space available.
 Entries: Paul W. Risch,
 1855 Wirt Rd, Apt. #93,
 Houston, Tx 77055

SCHEDULE

Saturday — 1st Round 8 a.m.

Round I: Men II (25 and up), Men I (to 24), Women (all ages)
 Round II: Men I, Women, Men II
 Round III: Women, Men II, Men I
 Note: Any round not finished on Saturday will be finished Sunday.

WORK!!!

WORK!!!

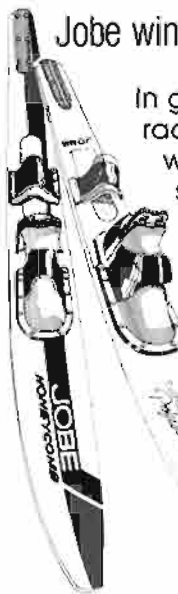
WORK!!!

4 out of 4 first places

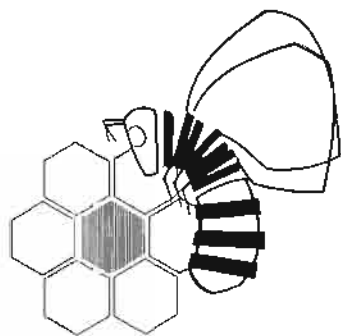
EVERY TIME WE
ENTERED, WE WON



Jobe wins the Cal Cup the Western Regionals the Masters & Nationals



In golf it's called the grand slam, in horse racing it's called the triple crown and in water skiing it's called almost impossible! But Jobe did it... A Jobe is the water ski that puts it all together in 1976. A Jobe sweep of every major slalom event in America. Jobe, with the revolutionary new design that's had them all talking, just stopped talking and proved it's point at the Cal Cup, the Western Regionals, the Masters and the Nationals. The talking is over, water skiers, the results are in. When it comes to buying a water ski, buy a Jobe... and win!



JOBE

12704 N.E. 124th Street
Kirkland, Washington 98033

SCR RECORDS

Jr. Boys Slalom	Mark Cumberland	47 Buoys	'74 Arkansas
Jr. Boys Tricks	Kenny Thorne	2450 Pts.	'76 Arkadelphia
Jr. Boys Jump	Mark Cumberland	88'	'74 Mag. Masters
Jr. Girls Slalom	Christy Weir	45 Buoys	'65 Texas Champ
Jr. Girls Tricks	Christy Weir	2490 Pts.	'65 Texas Champ
Jr. Girls Jump	Ruth Wix	77'	'73 Rio Villa
Boys Slalom	Bobby Cumberland	50 Buoys	'74 Mag. Masters
Boys Tricks	Marc Faulkner	3560 Pts.	'74 Regionals
Boys Jump	Johnny Blackburn	125'	'68 Lake Worth
Girls Slalom	Jo Beth Reymann	44.5 Buoys	'65 Texas Champ
Girls Tricks	Jo Beth Reymann	2300 Pts.	'65 Texas Champ
Girls Jump	Jo Beth Reymann	89'	'65 Regionals
Women Slalom	Christy Weir	51 Buoys	'71 Austin
Women Tricks	Christy Weir	3670 Pts.	'72 Regionals
Women Jump	Christy Weir	102'	'72 Regionals
Sr. Women Slalom	Nita Reeves	40 Buoys	'76 Pelican
Sr. Women Tricks	Peggy Thorne	3050 Pts.	'75 Regionals
Sr. Women Jump	Jeffry Armstrong	88'	'76 Pelican
Men I Slalom	Bill Berry	53 Buoys	'72 Mag. Masters
Men I Tricks	Sonny Berry	3980 Pts.	'75 Austin
Men I Jump (5½')	Jay Bennett	142'	'75 Leesville
Men I Jump (6')	Penny Baker	150'	'60 Texas Champ
Men II Slalom	Ronnie Martin	50 Buoys	'75
Men II Tricks	Dick Osburn	4862 Pts.	'73 Nationals
Men II Jump (5½')	Danny Rowzee	158'	'73 Arkadelphia
Sr. Men Slalom	Vernon Gray	52 Buoys	'72 Mag. Masters
Sr. Men Tricks	Floyd McCreight	2790 Pts.	'75 Dallas
Sr. Men Jump	Charles Fontenot	113'	'76 Pelican



**WATER SKIS
UNLIMITED**

Complete Line of Skis & Accessories

RON ALTON
(713) 453-2900

540 UVALDE
HOUSTON, TX 77015

1977 Regional Tournament Officials

Chief Judge	Mary Gail Holcombe
Assistant Chief Judge	Jeffry Armstrong
Chief Boat Driver	Billy Reeves
Asst. Boat Driver	Ralph Armstrong
Asst. Boat Driver	Charles Fontenot
Chief Scorer	Carol Solomon
Appointed Judges	Pete Salassi
	Buddy Williams
	Floyd McCreight
	Jerry Edwards
	Jay Wyatt

1977 Nationals Officials (SCR)

Alternate Judges	Lavonne Herring
	Stan Coppock
Judge	Jeffry Armstrong
	Peter Salassi
Alternate	Danny Rowzee
	Mary Gail Holcombe
Boat Driver	Billy Reeves
Alternate	Sam Newsom

Greers Ferry Lake Ski Klub, Inc.

P.O. Box 589
HEBER SPRINGS, ARKANSAS 72543
A/C 501 362-2190 or 362-5359

The GREERS FERRY LAKE SKI KLUB would like to extend an invitation for you to join us on our beautiful 40,000 acre lake for water skiing, boating, swimming, camping, picnicking, scuba diving and sight seeing. There are 14 public and fully developed campgrounds.

COME SKI WITH US!

For free brochure write to above address.

SPONSORED BY



HEBER SPRINGS, ARK. 72543

HOME OF THE
OZARK LAWN SWING

HOUSTON CORRECT CRAFT

7629 Harrisburg Blvd.
Houston, Texas 77012
Tel. 1 - 713 - 921-4755

*Sales & Service for Correct Craft and American Skier
Tournament Boats.*

Complete Line of High-Performance and Competition Skis
and Accessories & Ski Kites

Discount to A.W.S.A. Members

Let us help you have a great ski season this year.

Best Wishes Skiers
Jay Juneman

AWSA Standard Tournament Entry Form

Name of Tournament _____
 Official who is to receive this Entry Form _____
 Address _____
 Date this form was mailed _____ Entry fee enclosed: \$ _____

Please accept my entry in the events marked (X) below in the above named tournament. In consideration of your accepting this entry, I hereby, for myself, my heirs, executors and administrators, and/or for the minor for whom I am signing: (1) Release and forever discharge the sponsoring club of the above named tournament, the American Water Ski Association and any television, broadcasting or news gathering agency that may be assigned rights to cover the tournament, their agents, servants, and all persons connected with these competitions, of and from any and all rights, claims, demands and actions of any kind and every nature whatsoever that I may have, for any and all loss, damage or injury sustained by me or my equipment; (2) grant to the American Water Ski Association or its agents before, during, and after said competition; (3) grant to the American Water Ski Association or its agents before, during, and after said competition the exclusive right to use any photographs, television pictures or tapes, silent or sound motion pictures taken of me for the minor child for whom I am signing before, during or after the above named tournament, in connection with news or publicity coverage of the tournament or the American Water Ski Association, or the televising of the above named tournament; (4) agree that the American Water Ski Association or its agents and persons shall have the right to permit, control or prohibit advertising material of any kind on equipment, clothing or property of the undersigned (or of the minor child for whom I am signing) used, worn or displayed at the site of the above named tournament before, during or after the tournament.

I further understand that the Tournament Committee reserves the right at any time, both before and during said competitions, to disqualify me and to refuse to allow me to compete in said competitions for any reasons that they in their sole and unlimited discretion deem just and proper, and in such event I will be entitled to the return of my entry fee and no more.

Name _____ (Please Print)
 Address _____ (Street) _____ (City) _____ (State)
 Signature of competitor _____
 Signature of parent or guardian _____ (For Minors Only)
 Date of Birth: Month _____ Day _____ Year _____
 Expiration date of AWSA membership _____

CHECK EVENTS YOU PLAN TO ENTER

Division _____ (Men, Women, Boys, Girls, Senior Men, Etc.)
 (See Section 3.02, Official AWSA Rules)
 Events: Slalom Jumping Tricks
 Mixed doubles Name of Partner _____
 Current Skiers Ratings Held (AWSA certified): Slalom _____ Tricks _____ Jumping _____
 No rating _____
 Third Class _____
 Second Class _____
 First Class _____
 Expert _____
 Master _____

I understand that where competition is divided according to AWSA ratings, I will be entered in the division which the tournament chairman deems appropriate for my rating. I further understand that if an event in my division is cancelled due to insufficient entrants, I may compete in another division according to Section 3.05, Official AWSA Rules.
 I desire to assist in judging meter reading as secretary scoring as starter boat driving as runner with equipment announcing as timer flag man other _____
 Official AWSA Judges Rating held: Asst. Ref. Senior none
 I plan to arrive one day two days early to assist in prepping tournament site for practice

Bogue Falaya

Lake Ransay open June 25, 26
 also bringing to you in the
 South Central Region!
 "Bogue Falaya barefoot" Aug. 13, 14

Ski Club

Covington, La.



Upper City Electric Co.

Commercial & Industrial
 Electrical Construction

"FOUNDED IN 1920"

(504) 733-2323
 421 Commerce Point
 Elmwood Industrial Park
 New Orleans, La. 70123

HOUSTON CORRECT CRAFT

7629 Harrisburg Blvd.

Houston, Texas 77012

Tel. 1 - 713 - 921-4755

*Sales & Service for Correct Craft and American Skier
Tournament Boats.*

*Complete Line of High-Performance and Competition Skis
and Accessories & Ski Kites*

Discount to A.W.S.A. Members

Let us help you have a great ski season this year.

Best Wishes Skiers

Jay Juneman

FIRST MATE CORRECT CRAFT INTRODUCTORY OFFER

SKI NAUTIQUE

TRAILOR, LOADING
EQUIPMENT, 351 FORD
DELIVERY WITHIN 300
MILES OF NEW ORLEANS

List \$ 10,216

FIRST NAUTIQUE THIS SPRING

\$ 7995

SKI TIQUE

1977 Demo

REAR LADDER, MOORING
COVER, 302 FORD
LOADING EQUIPMENT
SPARE TIRE

List \$ 7459

WILL SACRIFICE FOR

\$ 5850

BRIAN QUARTANO
4941 deMontluzin Street
New Orleans, La. 70122
504 - 283-5047

PRICES DO NOT INCLUDE TAX

EDWARD FINLEY
5502 Hurst Street
New Orleans, La. 70118
504 - 899-1730

Bogue Falaya

*Lake Ransay open June 25, 26
also bringing to you in the
South Central Region!
"Bogue Falaya barefoot" Aug. 13, 14*

Ski Club

Covington, La.



Upper City Electric Co.

Commercial & Industrial
Electrical Construction

"FOUNDED IN 1920"

(504) 733-2323
421 Commerce Point
Elmwood Industrial Park
New Orleans, La. 70123

SOUTH CENTRAL REGION
AMERICAN WATER SKI ASSOCIATION
502 CRESTVIEW
MARBLE FALLS, TEXAS 78654

U.S. Postage
PAID
Marble Falls, Texas 78654
Permit No. 32

12/31/77
Sam R. Newsom
2105 Robinhood Trail
Austin, Texas 78703 2-5
8

with dual
fins...
Now,
triple fins!

MASTERCRAFT
'77

STABILITY!



We don't say
much...



...we do it!

MASTERCRAFT

Rt. #9, Maryville, Tenn. 37801
(615) 988-2178

